



School Profile 2016 -2017

Lochgilphead Joint Campus





School Profile 2016/2017

<u>School Name</u>	Lochgilphead High School
<u>School Address</u>	Lochgilphead Joint Campus, Kilmory, Lochgilphead PA31 8AA
<u>Head Teacher</u>	Ann Devine

Lochgilphead High School is part of a 3-18 campus and benefits from a stunning location overlooking the loch. We have excellent outdoor facilities and lots of safe forestry land around us which give extensive opportunities to promote health and wellbeing and wider achievement.

The core values of the campus are: respect, achievement, fairness and happiness and we strive to work with parents and the wider community to help every pupil fulfil her or his potential. We have a skilled and dedicated group of staff, both teaching and non-teaching and, we believe, the most friendly, polite and pleasant pupils in Argyll.

Our ethos reflects our values, with an emphasis on encouragement, high expectations and the development of personal responsibility and self-discipline. We maintain the focus on academic attainment – and always will – while also building a curriculum delivering a range of courses which help pupils to become well-rounded individuals who can contribute to society and achieve personal fulfilment.

We have fully embraced *Curriculum for Excellence* and have now fully implemented the new national qualifications, the fruition of a huge amount of work by teachers over a number of years. We see almost all of our pupils leave to a positive destination, many of whom keep in touch with members of staff for several years after leaving us, demonstrating the strength of the relationships between staff and pupils which is such a vital part of the success of the school.

Curriculum Development and Wider Achievement

Improvement Targets Achieved 2015 - 2016

- Full implementation of new Higher and Advanced Higher courses
- Introduction of National 1,2, 3 courses as appropriate
- Development of electronic pupil profile - Acebook
- Consolidation of Learn to Learn in S1 and S2
- Ongoing production of differentiated materials to provide support and challenge for all pupils
- Ongoing development of curricular and assessment materials to achieve full implementation of *Curriculum for Excellence*
- Excellent progress in Eco developments, particularly with food and the environment
- Excellent progress towards embedding enterprise across the curriculum

Wider Achievement

Pupils continue to achieve success in a range of courses delivered in partnership with Argyll College (Skills for Work)

Course	Level	Number of passes
Engineering Skills	National 4	9
Early Education and Childcare	National 4	4
Maritime Skills	National 5	5

Our students also continue to benefit from the partnership with Community Learning and Development and the outstanding support they receive from Raymond Flanagan:

Dynamic Youth Awards	7
John Muir Award	6
Youth Achievement Awards Bronze (Nat 4)	18
Youth Achievement Awards Silver (Nat 5)	3
Youth Achievement Awards Gold (Higher)	1
Youth Achievement Awards (Platinum)	2 (not completed as yet)
Saltire Awards	25
Lantra Chainsaw Course	16
Elementary Food Hygiene	13
Elementary First Aid	10
I Lead Training Part 1	24
I Lead Training Part 2	13
L Lead Training Part 3	12
Bored Meeting Training	6
ADP Legal High Training	10

In addition to the above:

- ✓ Young Enterprise local and national success
- ✓ Successful fundraising
- ✓ Sports Leaders and partnership with Active Schools Co-ordinator
- ✓ Sporting achievements
- ✓ Performing arts

Pupil Support

Ongoing improvements include:

- Excellent partnership with Skills Development Scotland
- Integrated working with Health and community partners to deliver drug and alcohol education
- Successful mental health awareness event – second year
- Improved Child's Planning process and parental involvement

Concerns

Recruitment remains the main concern

SQA RESULTS 2015/16 (A-C)

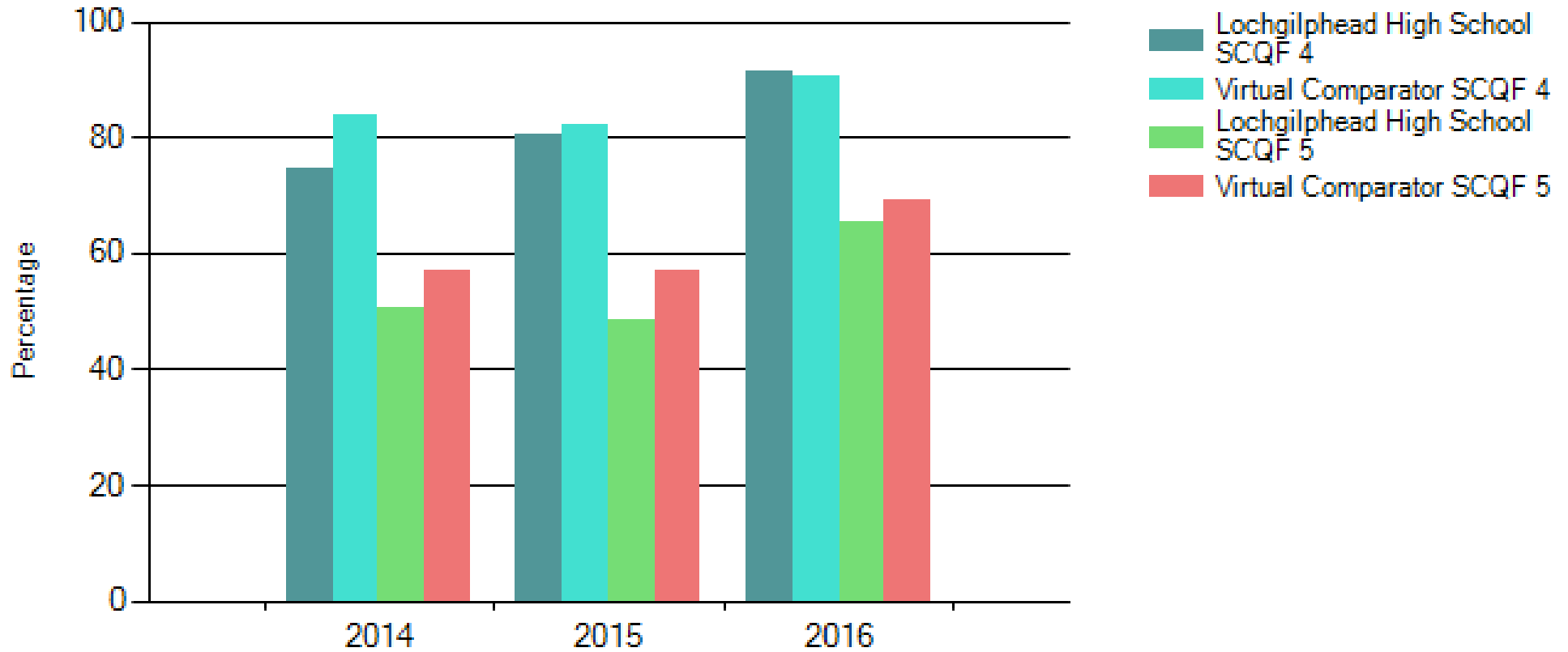
Course	Argyll and Bute Average	National Average	Lochgilphead High School	Difference (National average)
National 4	96.17	93.2	98.82	+5.62
National 5	76.23	79.4	78.43	-0.97
Higher	78.29	77.2	70.08	-7.12
Advanced Higher	75.22	81.7	75.47	-6.23

3 YEAR PATTERN

Course	Argyll and Bute Average			National Average			Lochgilphead High School		
	13/14	14/15	15/16	13/14	14/15	15/16	13/14	14/15	15/16
National 4	100	100	96.17	93.9	93.3	93.2	100	100	98.82
National 5	82.00	75.31	76.23	81.3	79.8	79.4	81.19	80.05	78.43
Higher	76.9	76.98	78.29	77.6	76.7	77.2	77.96	84.36	70.08
Advanced Higher	79.00	84.07	75.22	81.5	80.9	81.7	75.68	92.86	75.47

As can be seen from the colour coding, results have fluctuated and there has been close analysis of performance to identify areas of strength and areas for development – this will be discussed at the Area Committee meeting and with our local councillors.

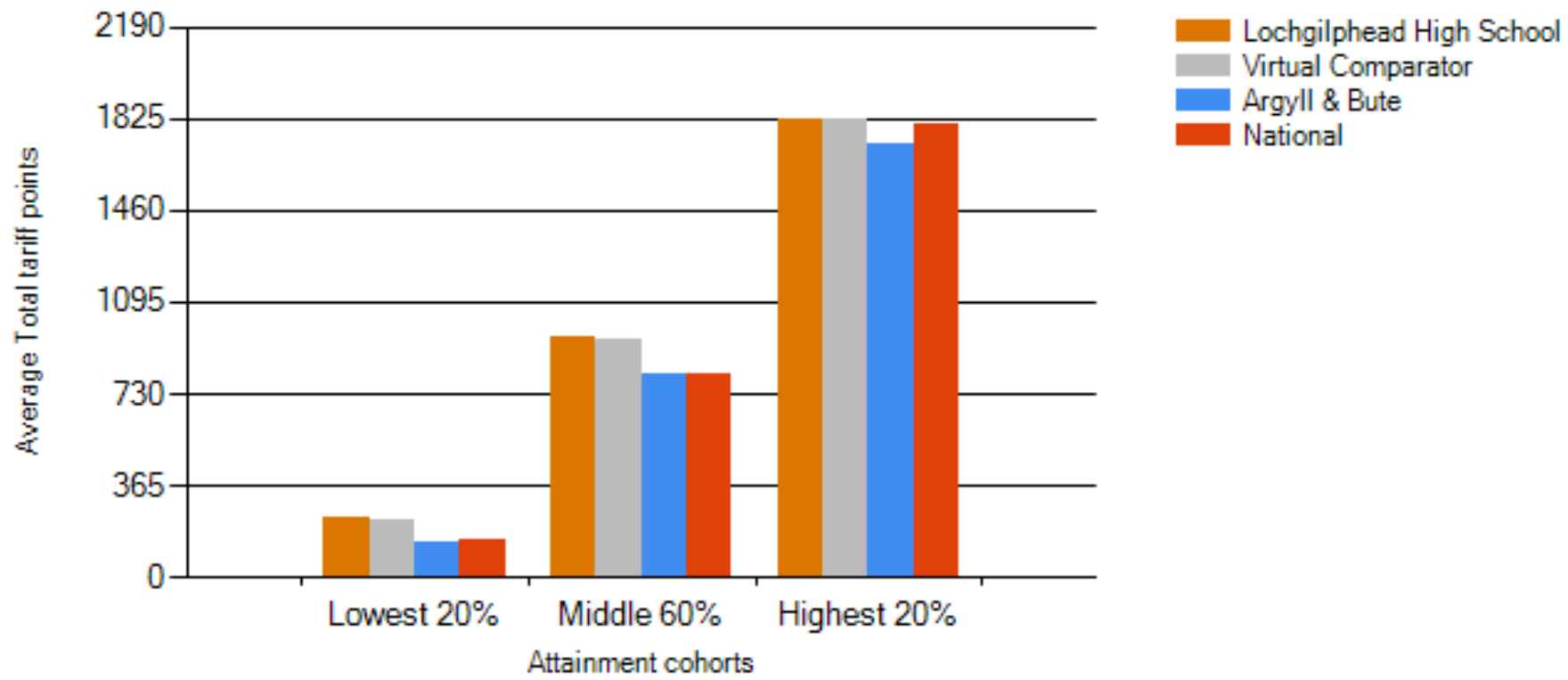
Improving attainment in literacy and numeracy
Percentage of Candidates Attaining Literacy and Numeracy



Overall improvement at both levels

Improving attainment for all

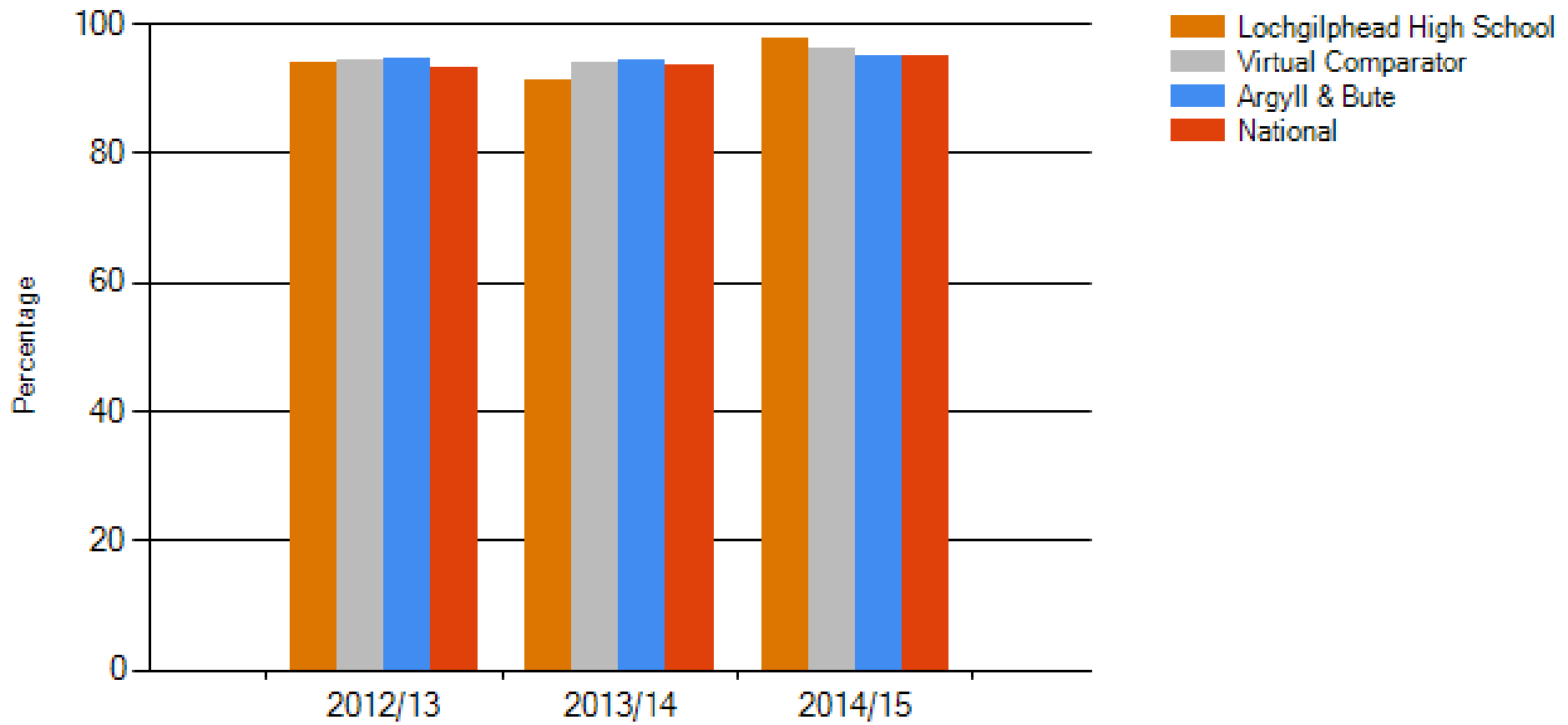
Average Total Tariff Points



performance overall

Strong

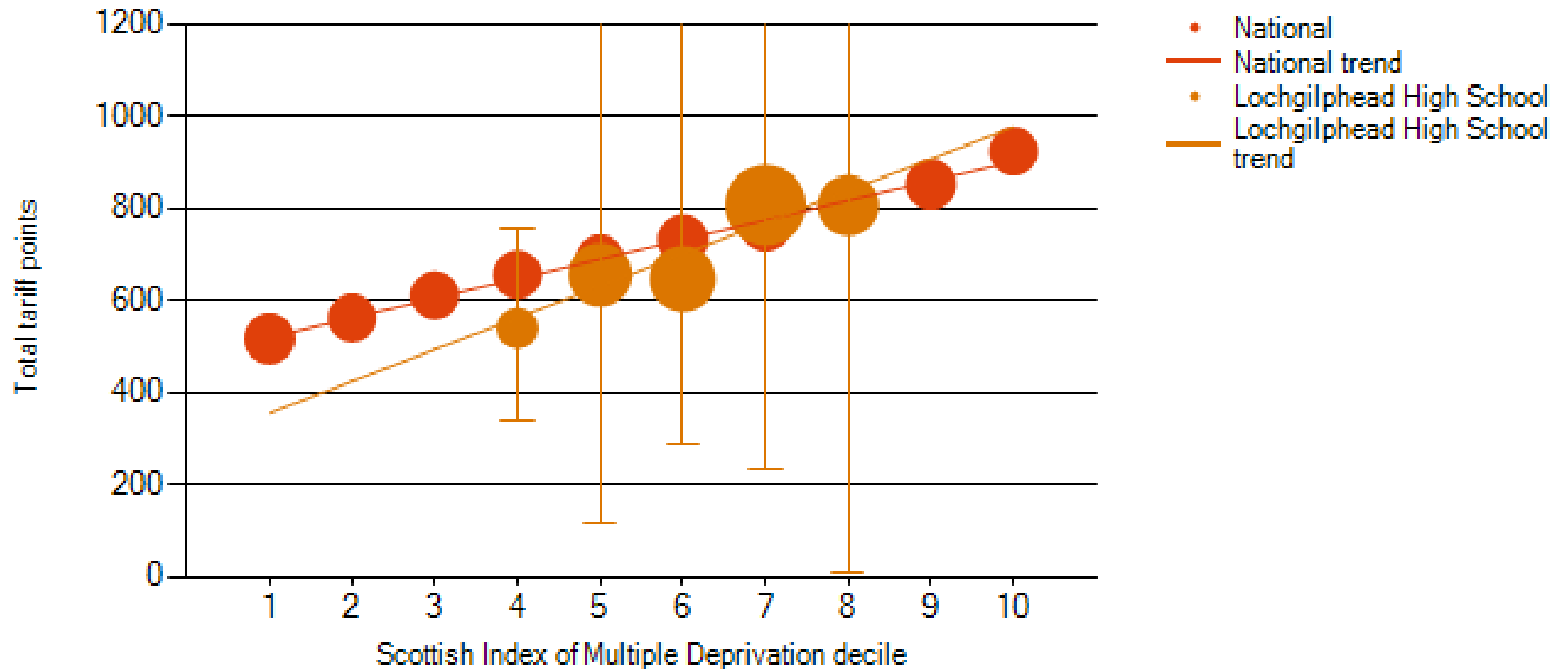
Increasing participation



Positive destinations improving

Tackling disadvantage by improving the attainment of lower attainers relative to higher attainers

Attainment versus Deprivation



Lochgilphead High School data

Overview

Measure	11/12	12/13	13/14	14/15	15/16	
Roll (as at census)	503	499	491	488	469	
Clothing and Footwear Grant (number of pupils)	31	33	37	51	67	
Clothing and Footwear Grant (% of number of pupils)	6.2%	6.6%	7.5%	10.5%	14.29	
Clothing and Footwear Grant (%) - Authority Average ⁵	7.56	8.51	9.54	15.60	na	
Free School Meals (number of pupils)	no data	45	43	41	58	
Free School Meals (% of number of pupils)	no data	9.0%	8.8%	8.4%	12.37	
Free School Meals (%) - Authority Average	na	13.1	12.0	10.8	na	
Free School Meal - National Average for Secondary Schools (%) ⁶	15.2	15.4	15.5	15.0	na	

Attendance, Absence and Exclusions⁷

Measure		12/13	13/14	14/15	15/16	Range of Attendance (%) over 4 years ⁸
Attendance:						4.19
Attendance (% of school roll)		94.29	93.49	92.01	90.10	
Authorised Absence (% of school roll) ⁹		4.69	4.89	5.68	6.75	

Unauthorised Absence (% of school roll)		0.98	1.55	2.09	2.88
Attendance Number of Pupils (%) - Authority Average		93.15	93.1	92.64	91.8
Attendance Number of Pupils (%) - National Average ¹⁰		93.6%	not collated	93.7	NA

Measure		12/13	13/14	14/15	15/16
<i>Exclusions: secondary school</i>					
Exclusion Openings		na	108	86	63
Exclusion Incidents		na	18	15	11
Number of Pupils		na	15	10	7
Exclusion Incidents per 1000 pupils		38.2	84.91	181.82	23.31
Exclusion Incidents per 1000 pupils - Authority Average		51.39	52.46	39.81	na
Exclusion Incidents per 1000 pupils - National Average ¹⁰		58.3	not collated	not yet available	NA

School Leaver Destination Returns (SLDR)⁴

Measure	11/12	12/13	13/14	14/15	15/16
Number of Total Leavers	86	83	92	94	Data not yet collated
Number of Young People entering Higher Education (%)	45.3%	55.4%	34.8%	45.7%	
Number of Young People entering Further Education (%)	22.1%	9.6%	25.0%	7.4%	
Number of Young People entering Training (%)	2.3%	1.2%	1.1%	5.3%	
Number of Young People gaining Employment (%)	20.9%	27.7%	29.3%	28.7%	
Number of Young People gaining Voluntary Work (%)	1.2%	0.0%	0.0%	3.2%	
Number of Young People entering Activity Agreements (%)	1.2%	0.0%	0.0%		
Number of Young People - Unemployed Seeking (%)	5.8%	6.0%	7.6%	5.3%	
Number of Young People - Unemployed Not Seeking (%)	0.0%	0.0%	2.2%	4.3%	
Number of Young People - Unconfirmed (%)	1.2%	0.0%	0.0%		
Total number of young people in a Positive Destination (%)	93.0%	94.0%	90.2%	90.4%	
Total number of young people in Other Destination (%)	7.0%	6.0%	9.8%	9.6%	
Total number of young people in a Positive Destination (%) Authority Average	90.1%	92.5%	91.0%	93.1%	
Total number of young people in Other Destination (%) Authority Average	9.9%	7.6%	9.0%	6.9%	
Total number of young people in a Positive Destination (%) National Average	89.9%	91.4%	92.3%	92.9%	
Total number of young people in Other Destination (%) National Average	10.1%	8.6%	7.7%	7.1%	

Footnotes

Data will be anonymised to protect individuals where there are fewer than 5 pupils and or presentations.

SQA Please note that this data is based on current interim results. It does not take into account any updated results due to the SQA Post Result Services and therefore this data could change and is not reflective of leavers exit qualifications which are cumulative. Insight data is updated at the end of February that results post-results service outcomes.

¹ SQA Performance data was collected on 23rd November 2015 from SEEMiS Vision. Information previously provided in the SQA Authority Analysis reports for Committee will differ slightly to information provided here in order to ensure consistency of approach in collating data for comparative purposes.

^{1a} Please note that some schools operate a positive presentation policy whereby they present students, if at all possible or at parental request for higher units however this can impact both the percentage pass rate and the level of awards. Therefore care must be taken when comparing number of presentations to the percentage pass rate.

² Results up to and including 2012/13 national percentages were sourced from the Annual Statistics Report 2013 (available only as whole percentages). National percentages grades A-C for 2013/14 came from Attainment Statistics (December) 2014. National percentages for 2014/15 and grades A-D for 2013/14 came from Attainment Statistics (August) 2015. Documents produced by SQA.

³ 2013/2014 was the first year National 4 and National 5 Qualifications were offered as part of the SQA diet. Therefore no performance data is available prior to this date. 2014/2015 was the last academic year that Intermediate 1 and Intermediate 2 qualifications were offered as part of the SQA diet of examinations. They have been superseded by National 4 and National 5. Standard Grade qualifications were offered for the last time in 2012/2013 and were superseded by National 4 and National 5.

⁴ SLDR data is published by Skills Development Scotland (SDS) on behalf of The Scottish Government. The year runs from 1st August to 31st July each year and the data is collected on the 1st Monday in October each year. The data shown in this profile is the initial data collected.

- Higher Education includes HNC, HND and Degree courses
- Further Education includes Access, NPAs and Highers
- Training includes Employability Stage Funds 2 and 3 (previously called Get Ready for Work)
- Employment includes Modern Apprenticeships and any employment over 16 hours per week
- Voluntary includes Barnardos, Oxfam, Red Cross and community based volunteering
- Activity Agreements are for young people who are furthest removed from employment/training/education that are receiving mentoring support from a Trusted Professional
- Unemployment includes those young people who can't work through ill health, are caring for others or are pregnant

⁵ Clothing and Footwear Grant (CFG) is not shown as a National Average as each authority set their own criteria and therefore cannot be compared accurately. Figures are based on census roll figures.

⁶ National Averages for FSM have been taken from Summary statistics for attainment, leaver destinations and healthy living, No. 5: 2015 Edition,

⁷ Attendance, Absence and Exclusion information is now collected on a biennial basis by Scottish Government and was **not** collected for 2011/2012 or 2013/2014 academic year. Data was collected in August for session 2014/15 and is therefore not yet available.

⁸ Please note that Attendance and Exclusion data can only be compared over a 4 year period as academic session 2015/16 is not yet complete and therefore the data for these years may change. The 4 year percentage change compared 4 full years. Please note that session 2014/2015 figures have been updated from last year's report to show the final figure. This information is taken from SEEMiS Vision.

⁹ Authorised absence includes bereavement, short – term exceptional domestic situations, religious observance, weddings of immediate family. Unauthorised absence includes truancy, unexplained absence and most family holidays during term time. Attendance and absence is outlined in Management Circular 3.03.

¹⁰ National Averaged for Attendance and Exclusions for 2012/13 have been taken from Summary Statistics for Schools in Scotland, No.4 | 2013 Edition, 11th December, 2013 (amended 11th February 2014).